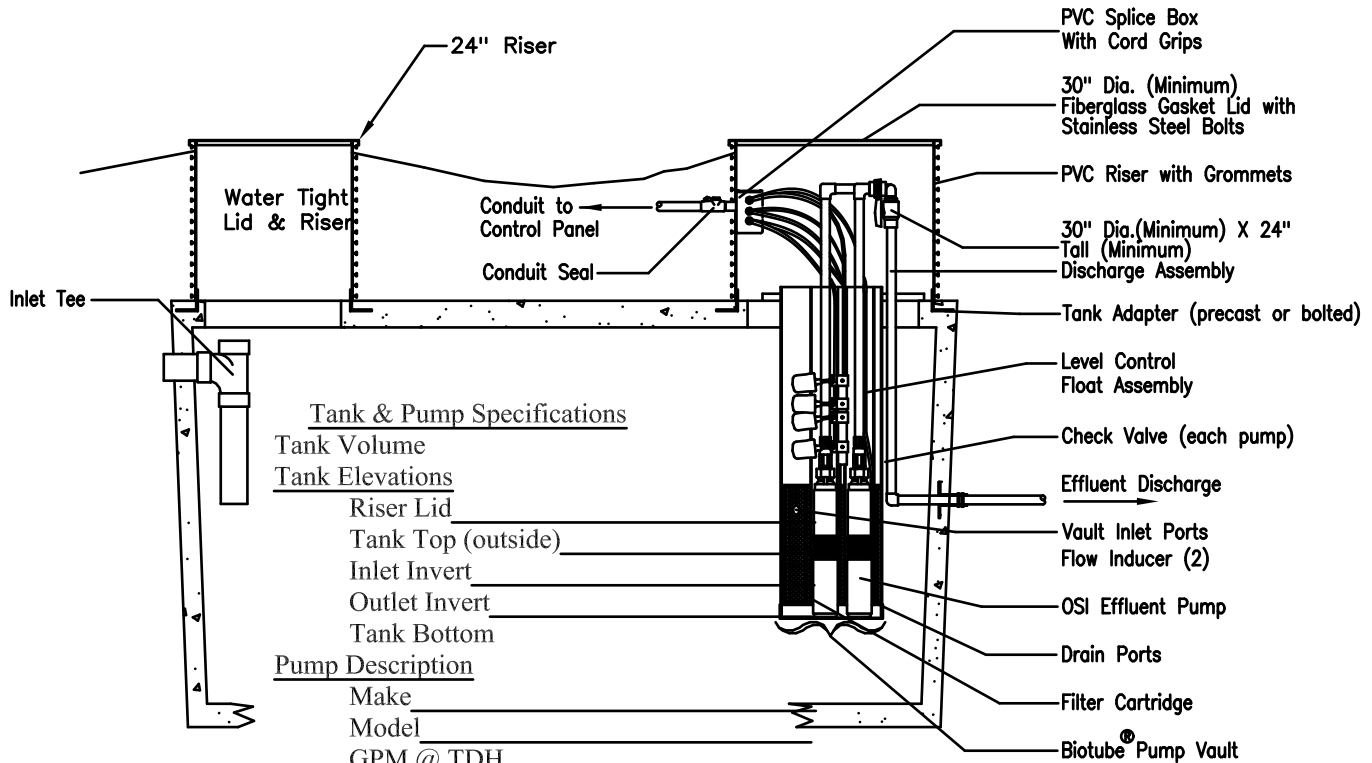
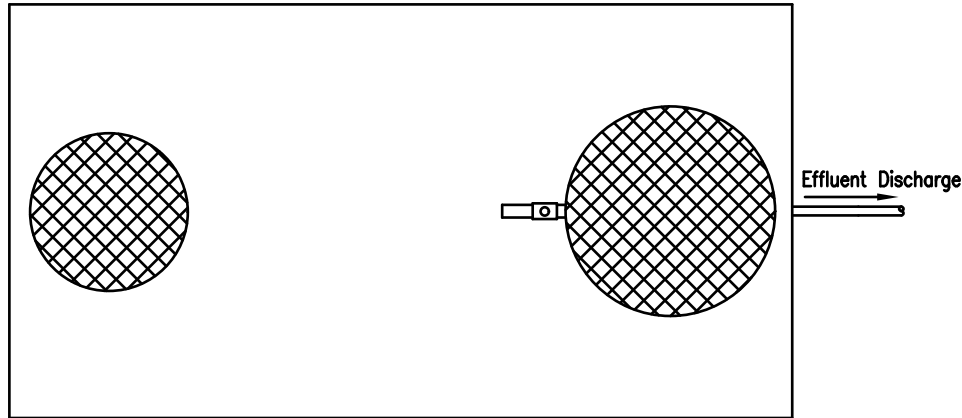




Orenco Systems<sup>®</sup>  
Incorporated



Tank & Pump Specifications

Tank Volume \_\_\_\_\_

Tank Elevations

Riser Lid \_\_\_\_\_

Tank Top (outside) \_\_\_\_\_

Inlet Invert \_\_\_\_\_

Outlet Invert \_\_\_\_\_

Tank Bottom \_\_\_\_\_

Pump Description

Make \_\_\_\_\_

Model \_\_\_\_\_

GPM @ TDH \_\_\_\_\_

HP \_\_\_\_\_

Voltage/Phase \_\_\_\_\_

Dose Volume \_\_\_\_\_

Pump Vault Model \_\_\_\_\_

Dischrge Assembly Model \_\_\_\_\_

Float Model \_\_\_\_\_

Control Panel Model \_\_\_\_\_

STEP HH Duplex (Single Forcemain)  
1 Vault-2 Pumps

Water Tight Tankage Spec.

It Is Necessary That Tanks Be Vacuum Or Water Tested To Certify Water Tight Tankage. PVC Acces Risers Must Be Water Tight, Epoxied To Tankage And Lids Bolted Down For Liability Consideration. Contractor/Tank Manufacturer Shall Be Responsible For Repair Or Replacement Of Tanks With Leaks or Defects. Tankage Must Have 3 Year Warranty.

Patents # 4,439,323 & 5,492,635

Foreign Patents Pending

© 1997, Orenco Systems, Inc.

# Duplex Effluent Pumping System

DRAWN	jdu
SCALE	
DATE	12/20/04
APPROVED	

7125 East Pickard Road  
P. O. Box 309  
Mt. Pleasant, MI 48804-0309  
ph-989-773-9938  
fax-989-772-3415



REVISION	DATE	BY
1.	12/04	jdu
2.	6/08	SLB
3.		
4.		
5.		

NO	1.	2.	3.	4.	5.
SHEET					
	1				
	OF				

DRAWING NO.  
SD1