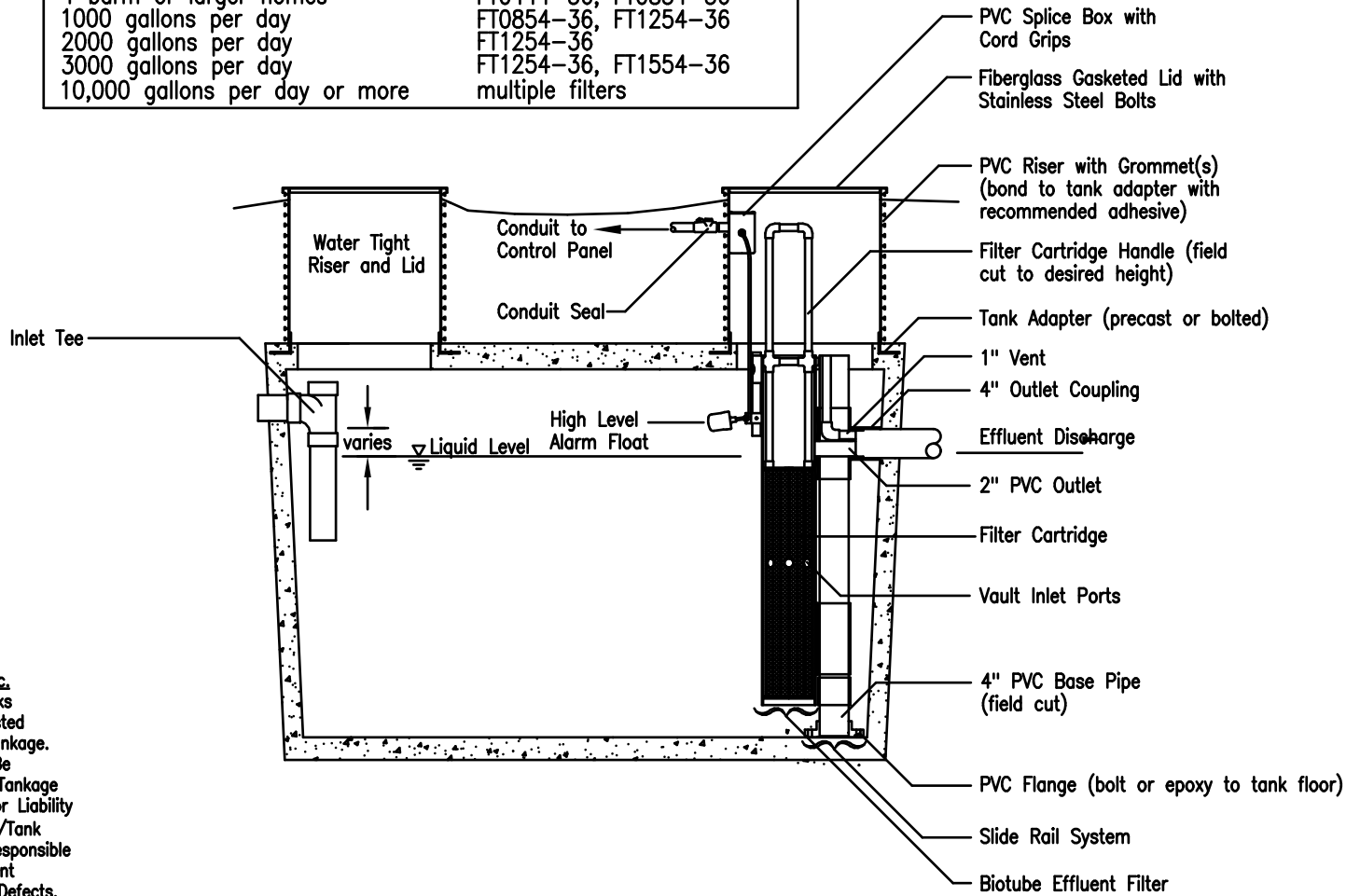




Oreco Systems[®]
Incorporated

Generalized Applications Chart

Source	Recommended Filters
2 or 3 bdrm single family homes	FT0444-36
4 bdrm or larger homes	FT0444-36, FT0854-36
1000 gallons per day	FT0854-36, FT1254-36
2000 gallons per day	FT1254-36
3000 gallons per day	FT1254-36, FT1554-36
10,000 gallons per day or more	multiple filters



Water Tight Tankage Spec.

It Is Necessary That Tanks Be Vacuum Or Water Tested To Certify Water Tight Tankage. PVC Acces Risers Must Be Water Tight, Epoxied To Tankage And Lids Bolted Down For Liability Consideration. Contractor/Tank Manufacturer Shall Be Responsible For Repair Or Replacement Of Tanks With Leaks or Defects.

Patents # 4,439,323 & 5,492,635

Foreign Patents Pending

© 1997, Oreco Systems, Inc.

Note: 12"-15" filters require the slide rail option for access purposes. Use of multiple filters or deeper versions of standard filters to acheive desired screen area is an option at any flow. Many situations require special designs; modifications of standard filter dimensions are accommodated easily.

Primary Tank with Biotube[®] Effluent Filter on Slide Rail

Biotube Slide Rail

DRAWN	jdu	SCALE	DATE	12/20/04	APPROVED
<p>7125 East Pickard Road P. O. Box 309 Mt. Pleasant, MI 48804-0309 ph-989-773-9938 fax-989-772-3415</p>					
BY	jdu	SLB			
DATE	12/04	6/08			
NO. REVISION	1	2	3	4	5
SHEET	1 OF 1				
DRAWING NO. F9					